

400, 600 AND 800 AMP. COMBINATION CURRENT TRANSFORMER SECTION AND DISCONNECT

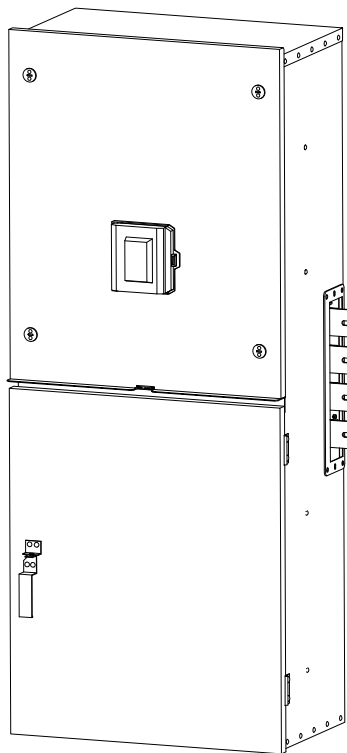
(DISCONNECT AT TOP)

FOR

ERICKSON ELECTRICAL EQUIPMENT CO.

COMMERCIAL METERING PANELBOARDS

FOR 3Ø-4W 480Y/277V. SYSTEMS.



FEATURES:

- TYPE 3R ENCLOSURES FOR OUTDOOR OR INDOOR INSTALLATIONS.
- GANGABLE AND COMPATIBLE WITH TYPE 6CM METERING EQUIPMENT.
- SIMPLE TO INSTALL WITH SINGLE-BOLT MAIN BUS BAR JOINTS.
- ALUMINUM ENCLOSURES INSTALL EASILY, NEVER RUST.
- DISCONNECTS AVAILABLE ARE 400-800 AMPS MAX. CIRCUIT BREAKERS OR 400A MAX FUSIBLE PULL OUT SWITCH.
- LISTED BY UNDERWRITERS LABORATORIES INC., FILE E12208.
- DISCONNECT AT TOP ALLOWS LOAD CABLES TO EXIT AT TOP OR THROUGH BACK.



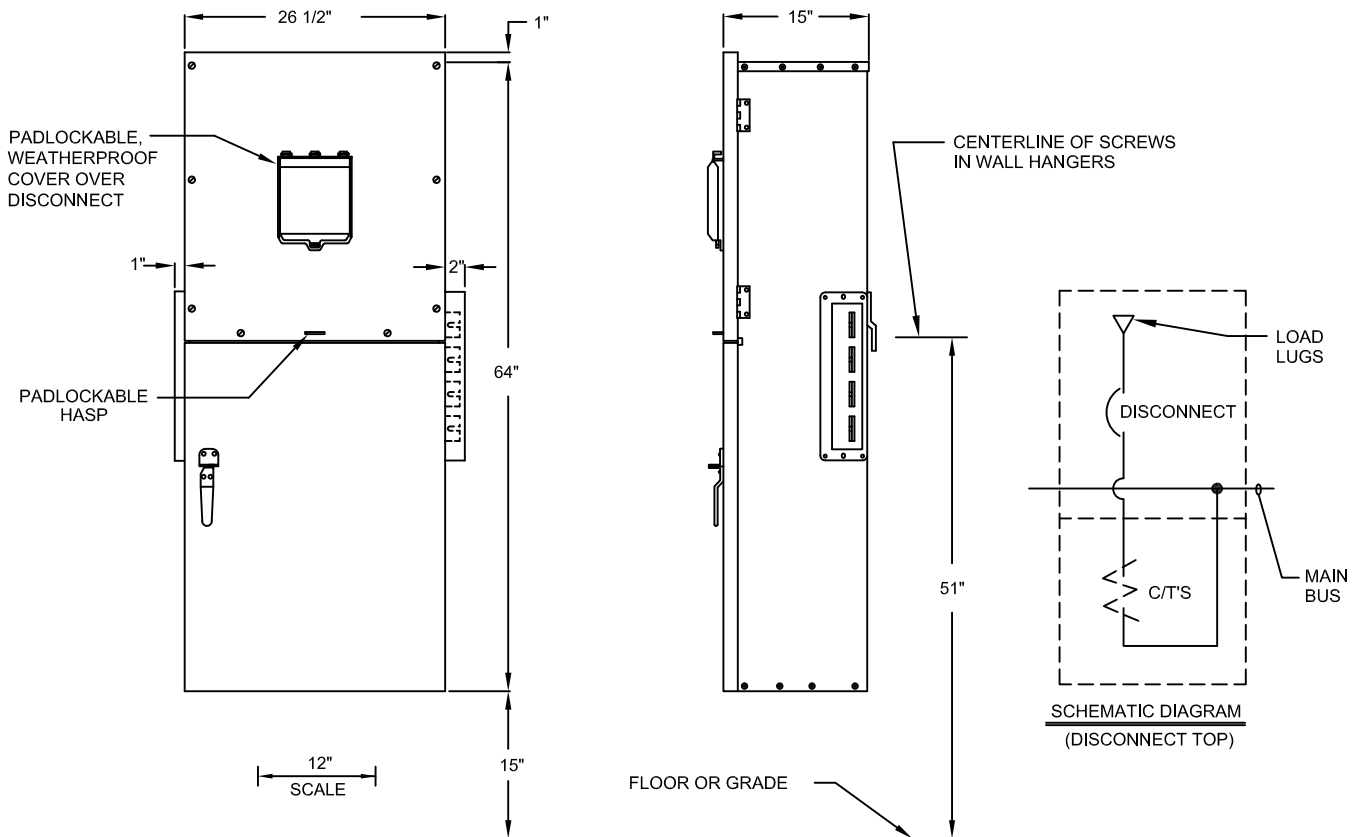
APPLICATION: FOR USE WITH ERICKSON TYPE '6CM' COMMERCIAL METERING PANELBOARDS AND OTHER METERING EQUIPMENT WHERE A 400, 600 OR 800 AMP. CURRENT TRANSFORMER SECTION AND DISCONNECT ARE NEEDED.

RATINGS: CURRENT TRANSFORMER SECTION AND DISCONNECT ARE RATED 400, 600 OR 800 AMP., 3Ø 4W, 480Y/277V. SYSTEMS. MAIN BUS IS RATED 1200 AMP. 800A & 1600A MAIN BUS IS AVAILABLE.

NOTE: SEE BULLETIN 6CM-CTA FOR UNITS WITH THE DISCONNECT AT THE BOTTOM (FOR BOTTOM CABLE EXIT)

www.ericksonelectric.com

ERICKSON ELECTRICAL EQUIPMENT CO.
475 BONNIE LANE • ELK GROVE VILLAGE, IL 60007
TELEPHONE: (847) 640-7701 / 1-800-952-7225
FAX: (847) 640-0565



NOTES:- END COVERS ARE REMOVABLE, & ARE TO BE INSTALLED ON END UNITS USING CARRIAGE BOLTS TO PREVENT UNAUTHORIZED ACCESS TO BUS BARS.

ENCLOSURES ARE TYPE 3R, FOR OUTDOOR OR INDOOR USE.

APPLICATION: 480Y/277 V.A.C. 3Ø 4W

SPACER BUS SECTIONS MAY BE REQUIRED. CONSULT UTILITY CO.

CURRENT TRANSFORMER SECTION WITH CLASS 'T' FUSIBLE DISCONNECT SWITCH (480Y/277V.)				
CATALOG NUMBER	AMP. RATING	SWITCH TYPE	LOAD LUG SIZE	SHORT CIRCUIT WITHSTAND RATING
CTB-P-465N-6CM8	400	1-400A PULLOUT	1 - 500 kcmil	200,000 RMS SYM. AMPS.
CTB-P-4644N-6CM8	400	2-200A PULLOUTS	1 - 300 kcmil	200,000 RMS SYM. AMPS.

CURRENT TRANSFORMER SECTION WITH CIRCUIT BREAKER DISCONNECT (480Y/277 V.)				
CATALOG NUMBER	AMP. RATING	BREAKER TYPE	LOAD LUG SIZE	SHORT CIRCUIT WITHSTAND RATING
CTB-KD-465N-6CM8	400	KD	1 - 500 kcmil	35,000 RMS SYM. AMPS.
CTB-LD-466N-6CM8	600	LD	2 - 500 kcmil	35,000 RMS SYM. AMPS.
CTB-MD-467N-6CM8	800	MDL	2 - 500 kcmil	50,000 RMS SYM. AMPS.

- THIS EQUIPMENT IS COMPATIBLE WITH TYPE 6CM METERING EQUIPMENT AND MUST BE USED IN CONJUNCTION WITH A MAIN SWITCH, MAIN CIRCUIT BREAKER OR TERMINAL BOX.
- THIS EQUIPMENT MUST BE USED IN CONJUNCTION WITH A TRANSFORMER RATED METER FITTING PER THE UTILITY COMPANY REQUIREMENTS.
- SUFFIX "CM8" REFERS TO 1200A COPPER CROSS BUS. (SUFFIX "CM7" INDICATES 800A ALUMINUM BUS. SUFFIX "CM9" INDICATES 1600A COPPER BUS.)